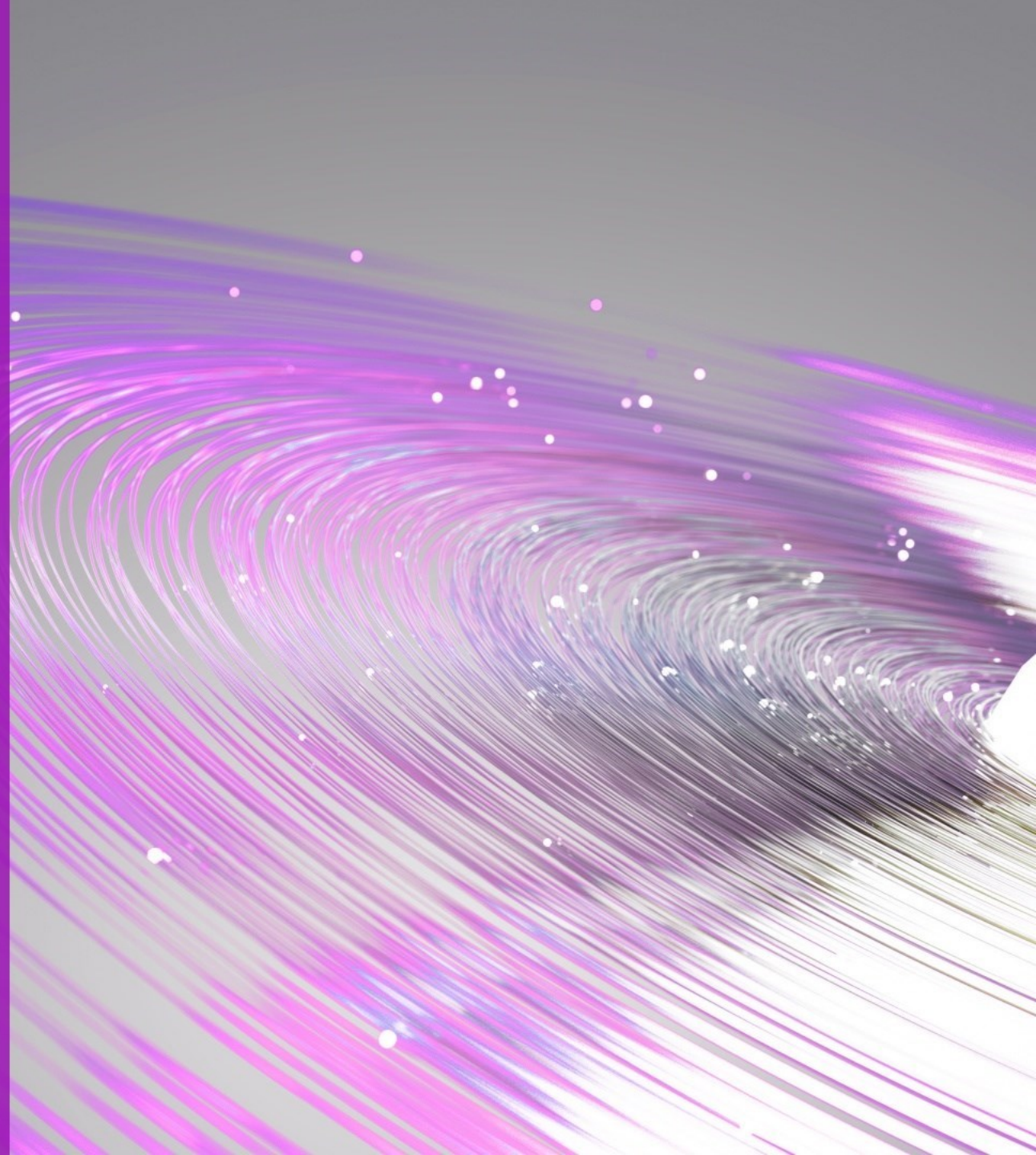


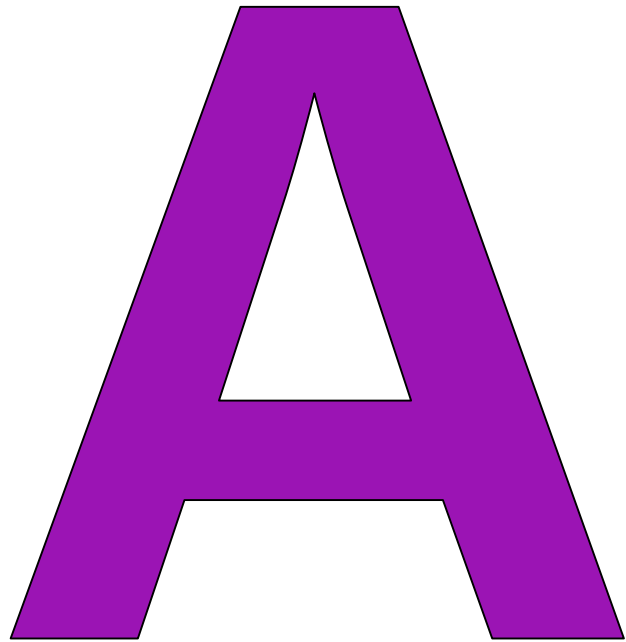
Risk transfer: Why is the ILS market important to Swiss Re?

Philipp Rüede – Head Alternative Capital Partners



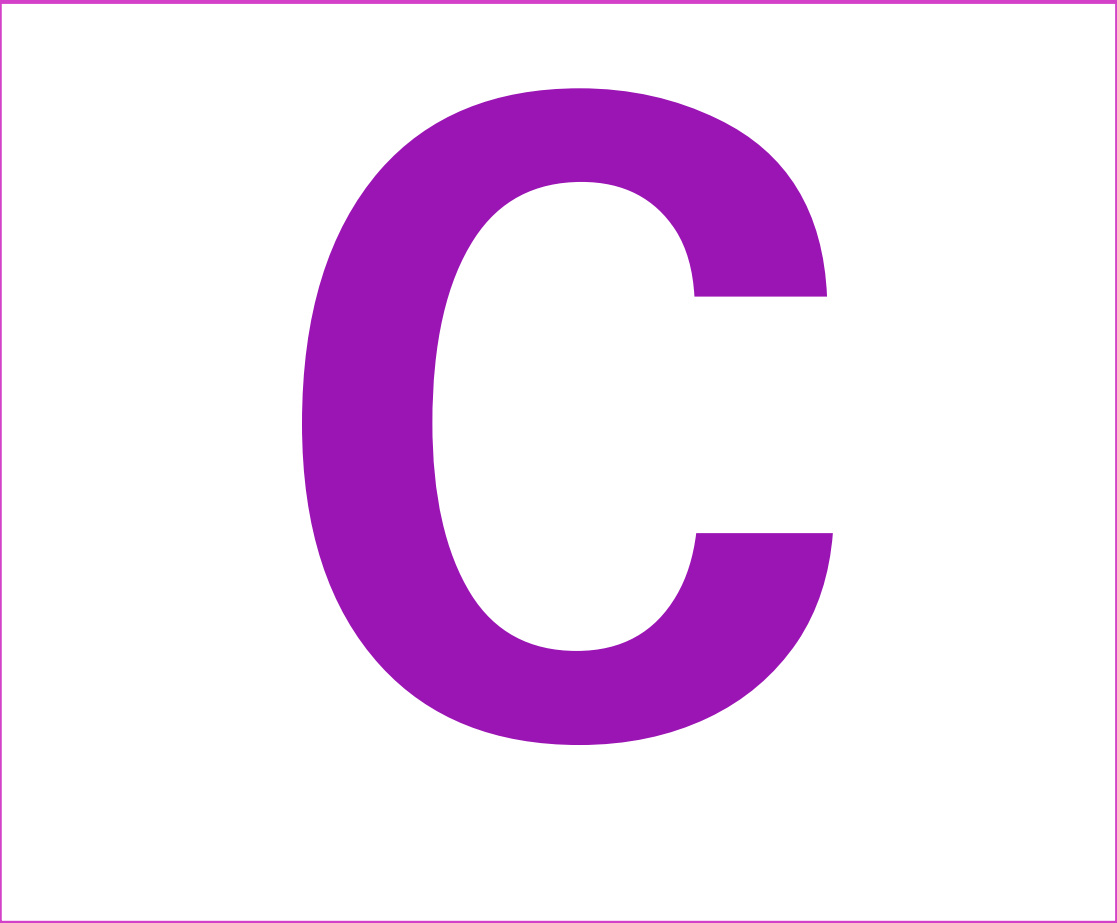
Welcome

Alternative Capital Partners (ACP) Rationale for Alternative



We exist to provide
alternatives to
traditional capital
structures like
equity, debt and
subdebt.

Alternative Capital Partners (ACP) Rationale for Capital



C

We protect Swiss
Re's **capital** and
focus on peak risks
where win-wins
exists.

Alternative Capital Partners (ACP) Rationale for Partners

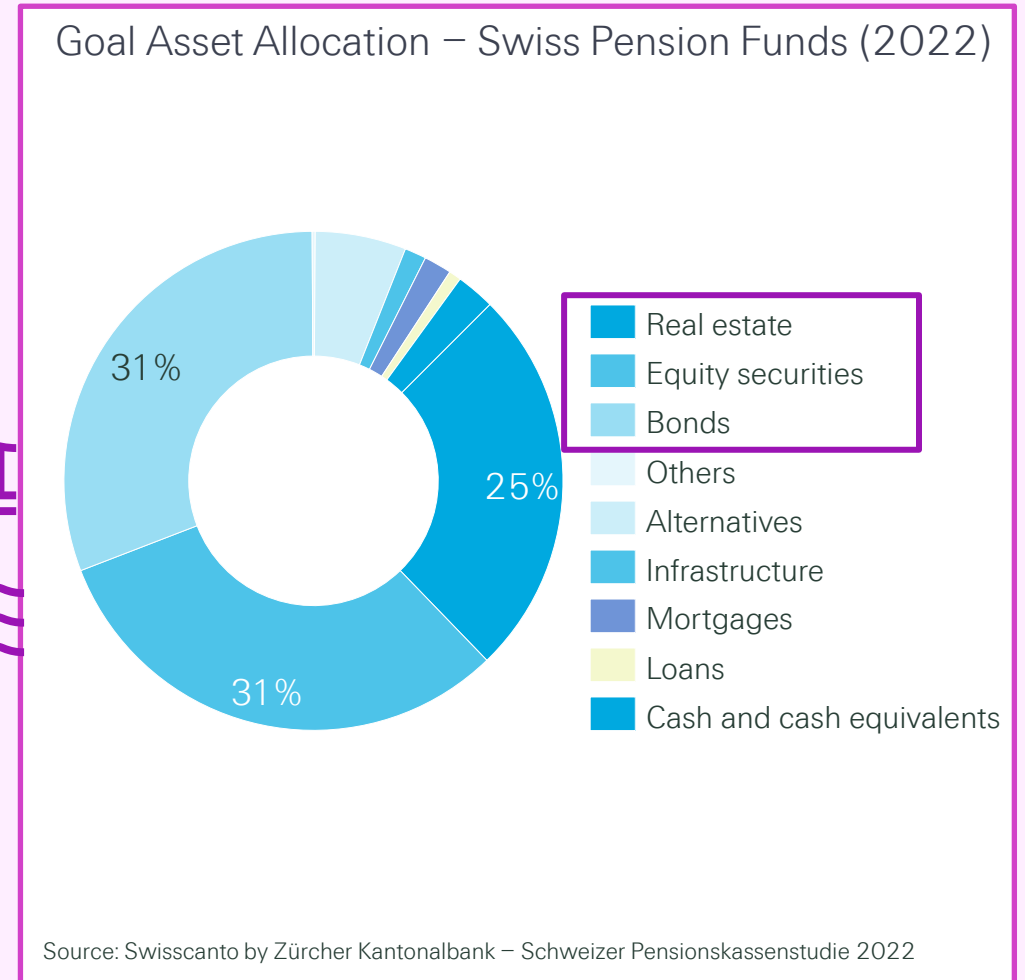
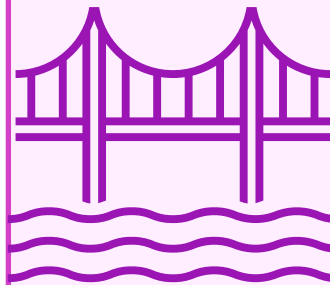
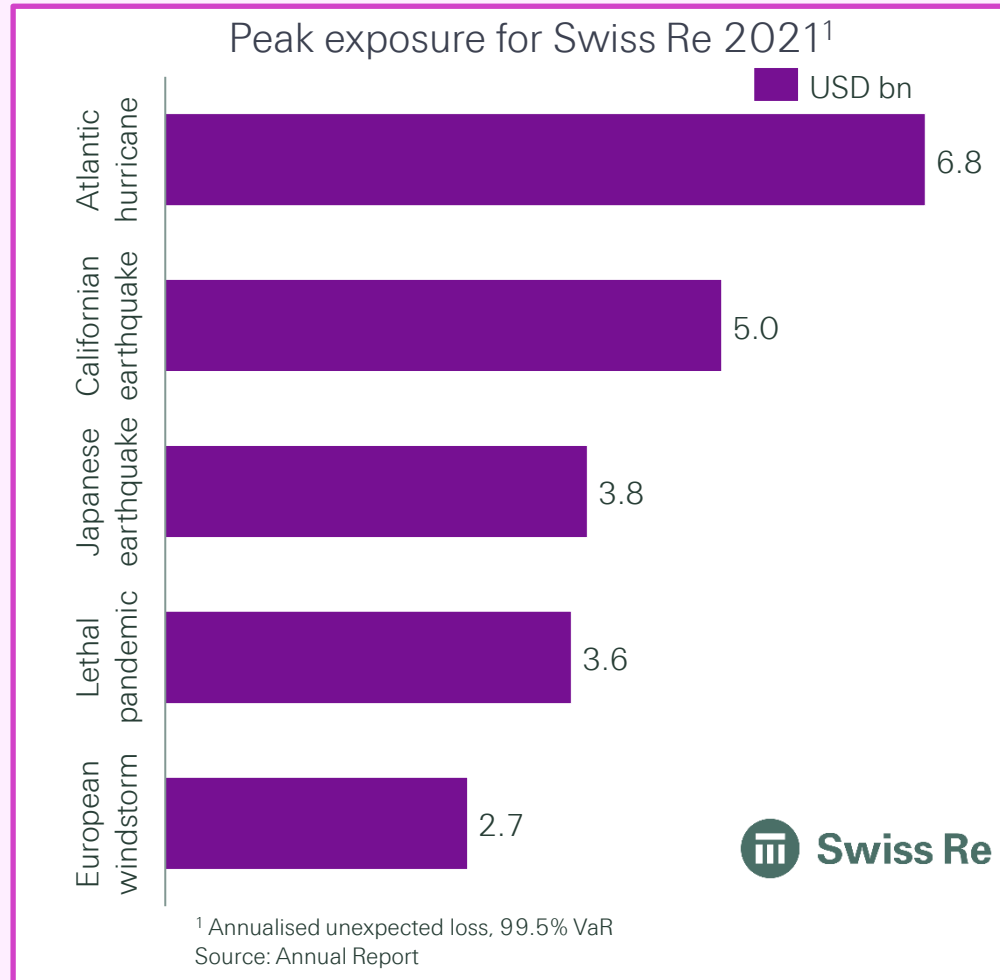


P

We keep skin in
the game and see
our investors as
our **partners.**

Alternative Capital Partners (ACP)

Rationale for partnerships: Swiss Re's peak exposures are in many cases complementary



Any
questions?



Legal notice

©2022 Swiss Re. All rights reserved. You may use this presentation for private or internal purposes but note that any copyright or other proprietary notices must not be removed. You are not permitted to create any modifications or derivative works of this presentation, or to use it for commercial or other public purposes, without the prior written permission of Swiss Re.

The information and opinions contained in the presentation are provided as at the date of the presentation and may change. Although the information used was taken from reliable sources, Swiss Re does not accept any responsibility for its accuracy or comprehensiveness or its updating. All liability for the accuracy and completeness of the information or for any damage or loss resulting from its use is expressly excluded.