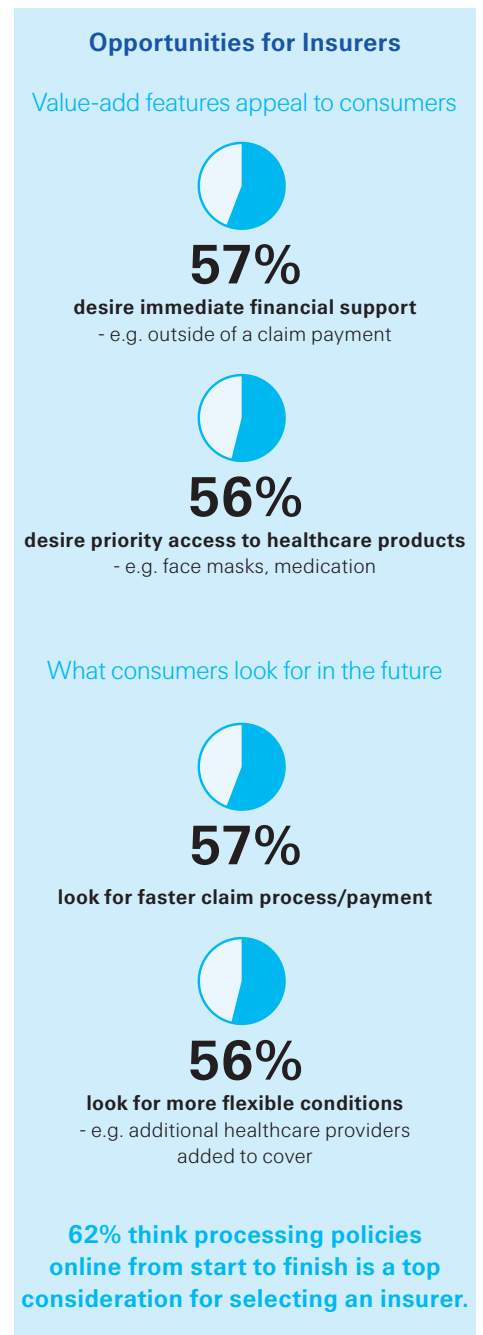
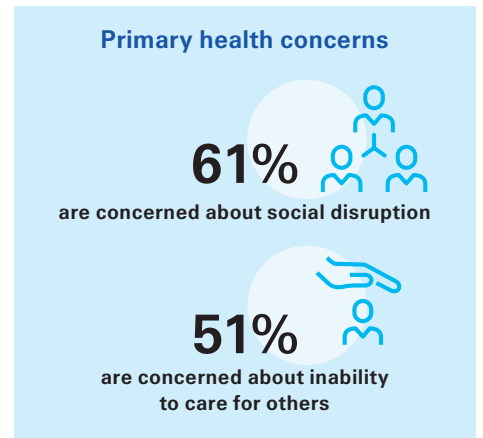
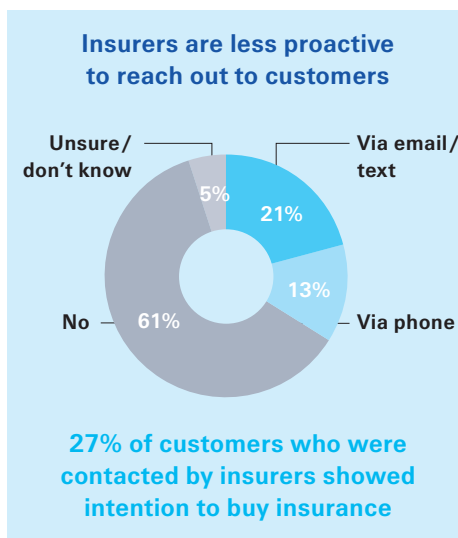
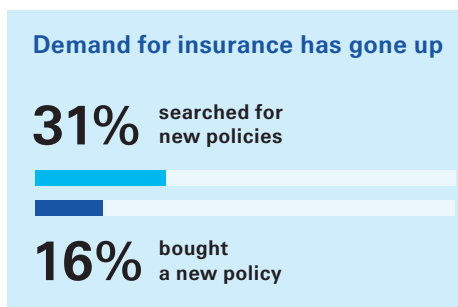
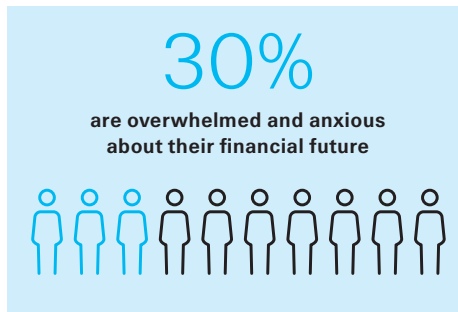
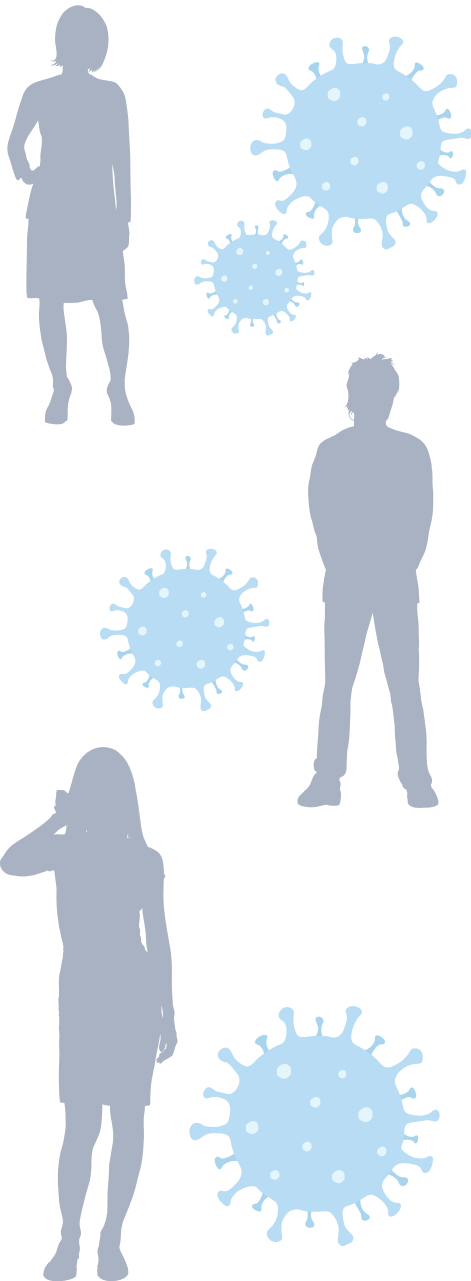


COVID-19 Consumer Survey Singapore

Swiss Re conducted a survey in Singapore* to understand how the COVID-19 outbreak has impacted consumer sentiment towards their financial situation, overall health, and future insurance purchases.



* The poll of 2 500 residents in Australia, Singapore, Hong Kong and Mainland China cities of Beijing and Shanghai was conducted by Ipsos in the 2nd week of April 2020, and data was collected via smartphone, laptop or tablet devices.