

Meet Virta

The Reversal Difference

The best disease management is disease reversal—
Sustainable Weight Loss and Diabetes Reversal

Different Method

Personalized nutrition without, with, and after GLP-1s

Different Care

Provider-led care, Rx optimization & technology

Different Outcome

In-year savings, sustained outcomes, 100% at risk*

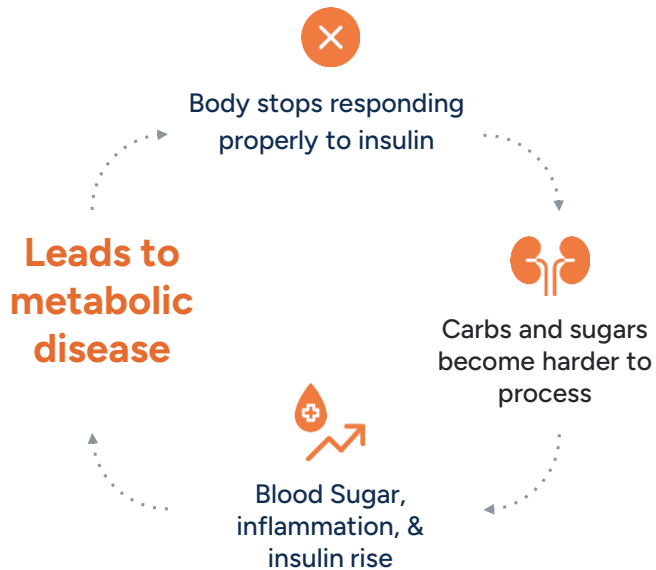
* 100% fees at risk in first year for employer partners



**10+ Conditions.
1 Root Cause.**



What is Metabolic Dysfunction?



How does Virta treat Metabolic Dysfunction?

Personalized nutrition care

PERSONALIZED TO METABOLISM. PERSONALIZED TO WHOLE-PERSON.

The right balance of Carbs/Sugars, Protein, Healthy Fats to fuel the body & restore the metabolism



Carbs



Protein



Healthy Fats

The new standard in Metabolic Care



Status Quo Solutions

Calorie restriction

Rx progressively increases

GLP-1s as a lifestyle

Outcomes are modest and temporary

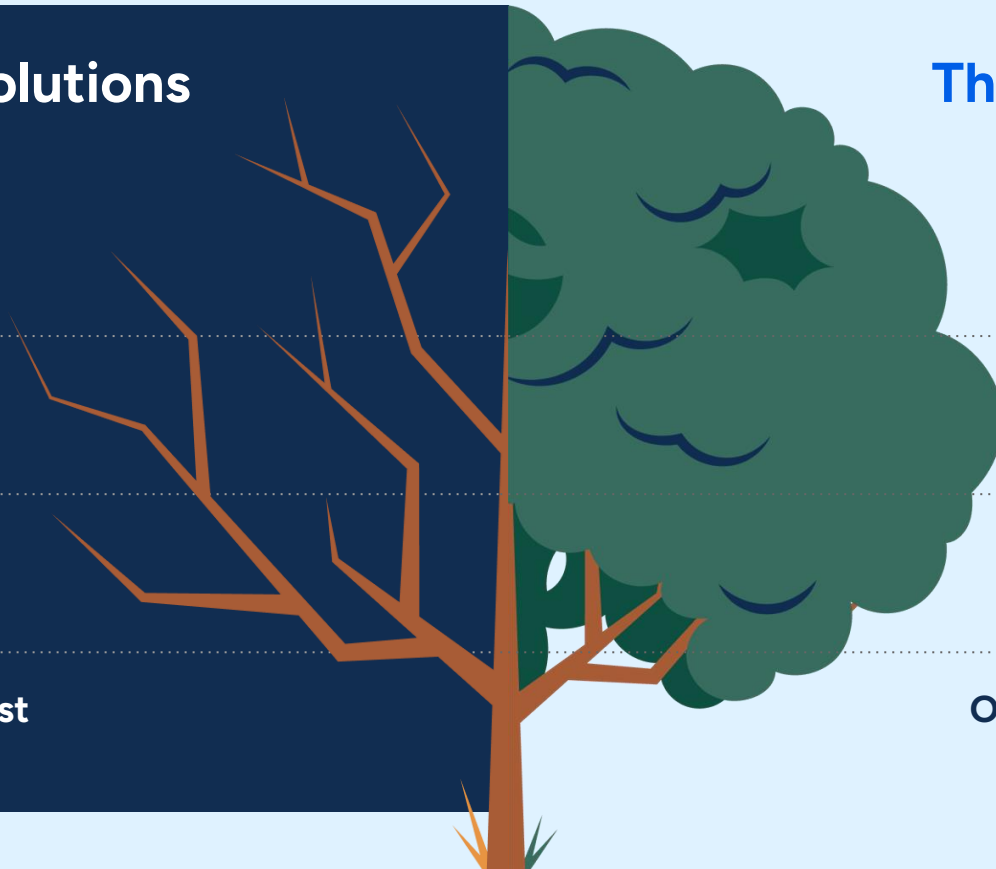
The Virta Method™

Reduced food cravings

Eliminate need for Rx

GLP-1s as a tool, with a proven off-ramp

Outcomes are meaningful and sustained



Different Method

The background features a light blue circular area on the left, a dark blue curved shape on the top right, and a green curved shape at the bottom. The text 'Different Method' is centered in the light blue area.

The Virta Method™ — Biology Over Restriction

BIOMARKER DRIVEN RECOMMENDATIONS

Personalized to metabolism



Carbs



Protein



Healthy Fats



PROVIDER LED GUIDANCE

Personalized to whole-person



Budget and Social Determinants of Health



Clinical Need



Food & Cultural Preferences



Readiness for Change



SUSTAINED RESULTS THROUGH NUTRITION

Focus on healthy swaps

Works like a GLP-1 –
Improves satiety & cravings

No calorie restriction

Provider-Led Care

Behavior Change Technology

Rx Optimization

Different Care

Dedicated care team builds trust and drives success



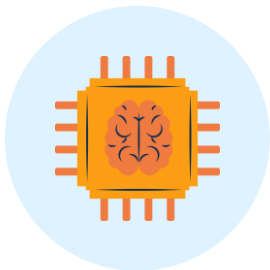
Care Team of Metabolic Experts

1 x PER DAY ENGAGEMENT WITH VIRT

- ✓ One dedicated provider + coach throughout
- ✓ Mind-body behavior change support
- ✓ 100+ hours of coach training
- ✓ Multidisciplinary backgrounds: MDs, RNs, RDs, CDCESs, LCSWs
- ✓ Pods for shared expertise



In-the-moment support influences day-to-day decisions



Virta AI Powers Daily Personalization

- ✓ Clear guidance takes guesswork out of grocery shopping, eating on the road, or meal planning
- ✓ Immediate, personalized, practical support
- ✓ Healthgrade AI tested for safety

Virta AI does not give medical guidance

PERSONALIZED MEAL PLANS

Meal planner

Powered by AI

Balanced Protein Plan

Day 1

- Carbonara Omelette
- Grilled Chicken Salad with Cucumber and Avocado
- Blackened Snapper

Day 2

- Egg Muffins

Edit Save

NUTRITION CHECKER

Cheeseburger

Today at 1:00 PM

Food insights
Just a few swaps away

33%	34%	32%
35g	38g	32g
Carbs	Protein	Fat

Ingredient breakdown

Serving size	Protein	Carbs
Hamburger Bun 1 Whole	6g	24g

Edit Log

VIV AI ASSISTANT

Chat

Coach Viv AI

Viv, I'm craving something sweet, can you help me?

You could make a quick berry parfait with full-fat Greek yogurt, a few berries and nuts

Today at 12:40AM

Viv
AI Assistant Beta

Message Viv AI

Today History Chat Discover Community

Different Outcomes

The background features a light blue circular area on the left, a dark blue curved shape on the top right, and a green curved shape at the bottom. The text 'Different Outcomes' is centered in the light blue area.

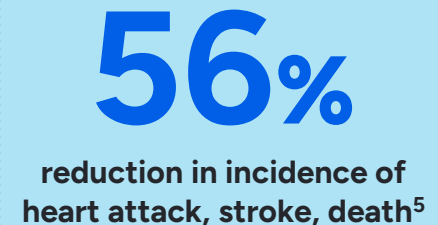
Reversal redefines the trajectory of chronic disease



METABOLIC DISEASE REVERSAL AT 1 YEAR



LIFE SAVING IMPACT



¹ McKenzie AL, Athinarayanan SJ, McCue JJ, et al. Type 2 Diabetes Prevention Focused on Normalization of Glycemia: A Two-Year Pilot Study. *Nutrients*. 2021; 13(3):749. doi: 10.3390/nu13030749. (Data is from prediabetes population.)

² McKenzie, A.L., Athinarayanan, S.J. Impact of Glucagon-Like Peptide 1 Agonist Deprescription in Type 2 Diabetes in a Real-World Setting: A Propensity Score Matched Cohort Study. *Diabetes Ther* (2024). <https://doi.org/10.1007/s13300-024-01547-0>

³ Aggregated, de-identified Virta real-world outcomes data for members aged 65+ and those living in high-disparity areas (ADI 4–5).

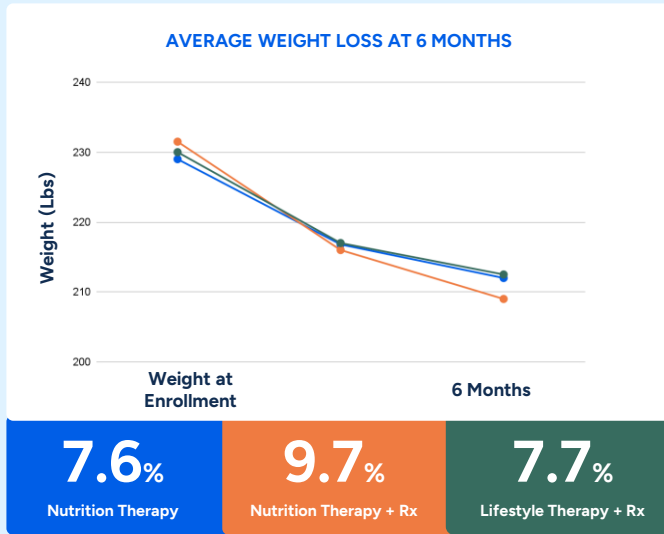
⁴ Hallberg SJ et al. *Diabetes Ther*. 2018; 9(2): 583-612. Outcomes among one year completers (83% retention in Virta Treatment; 90% retention in Standard Care). Rx refers to the volume of diabetes prescriptions at one year (which excludes metformin) compared to baseline and multiple insulins prescribed to a patient were counted as one Rx.

⁵ medRxiv preprint (2025) — “Real-World Cardiovascular Outcomes with a Carbohydrate-Reduced Telemedicine Intervention.”

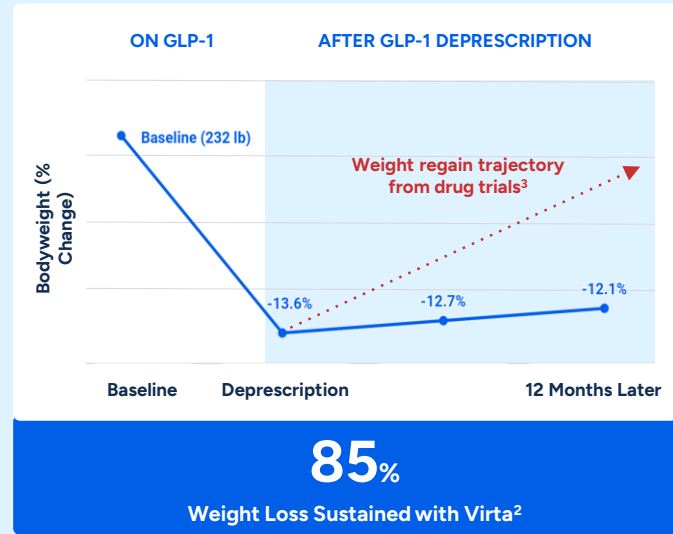
Benchmark standard of care citation available upon request.

Virta delivers results with or without GLP-1s

Members with or without GLP-1s achieve weight loss on par with clinical drug trials¹



Only solution with peer-reviewed, published outcomes on sustained weight loss after GLP-1s



¹ McKenzie AL, Athinarayanan SJ, McCue JJ, et al. Type 2 Diabetes Prevention Focused on Normalization of Glycemia: A Two-Year Pilot Study. *Nutrients*. 2021; 13(3):749. doi:10.3390/nu13030749. (Data is from prediabetes population.)

² McKenzie, A.L., Athinarayanan, S.J. Impact of Glucagon-Like Peptide 1 Agonist Deprescription in Type 2 Diabetes in a Real-World Setting: A Propensity Score Matched Cohort Study. *Diabetes Ther* (2024). <https://doi.org/10.1007/s13300-024-01547-0>

³ Wilding JPH, et al. *N Engl J Med*. 2021 Mar 18;384(11):989-1002. doi: 10.1056/NEJMoa2032183.

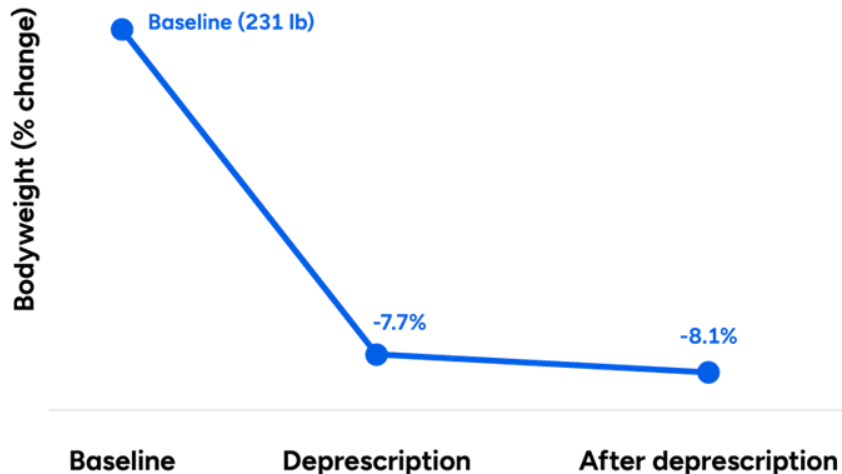
Note: Participants in the STEP-1 trial were patients with obesity. Patients included in Virta's cohort are patients with type 2 diabetes.

Pi-Sunyer X, et al. *N Engl J Med* 2015; 373:11-22. dOI: 10.1056/NEJMoa1411892

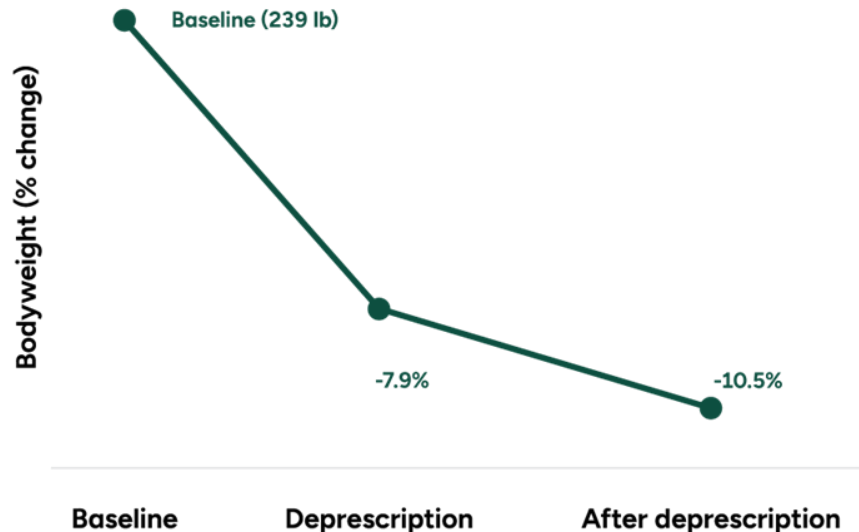
Kubota M, et al. *Cureus* 2023; 15(10): 446490. doi:10.7759/cureus.46490

Virta is a proven off-ramp from the latest, most powerful GLP-1s to sustained weight loss

Sustained weight loss 18 months after deprecation of Semaglutide



Sustained weight loss 18 months after deprecation of Tirzepatide



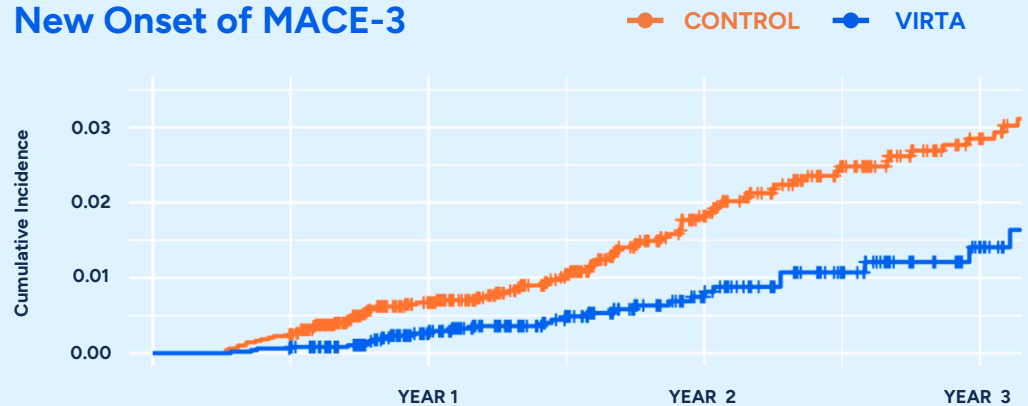
Lower rate of heart attack, stroke, and death (-54%)

Outcomes

54% reduction of heart attack, stroke, and death (MACE)

1-2.5x Better than GLP-1s^{1,2}

New Onset of MACE-3



INCIDENCE RATES

CONTROL GROUP

9.3 events per 1,000 person-years

VIRTa INTERVENTION

4.1 events per 1,000 person-years

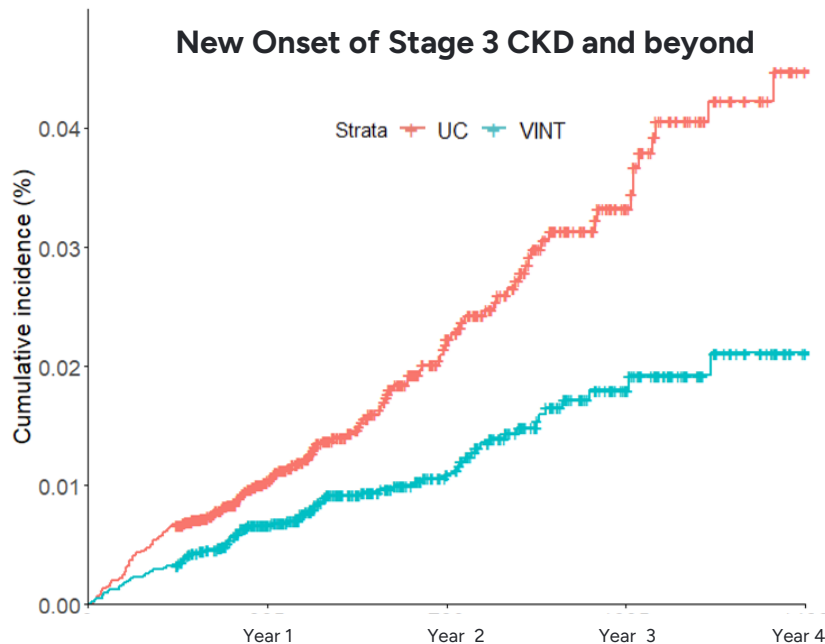
Note: Content is privileged and confidential

Source: Research by Priya Shanmugam, PhD, Senior Health Economist, Clinical Research Team

1,2: Comparison sources: <https://diabetesjournals.org/care/article-abstract/48/5/846/158048/Cardiovascular-and-Kidney-Outcomes-and-Mortality>; <https://dom-pubs.onlinelibrary.wiley.com/doi/epdf/10.1111/dom.70080>

Lower rate of new onset stage 3+ CKD diagnosis (-45%)

(2-4x better than known pharmacotherapies)



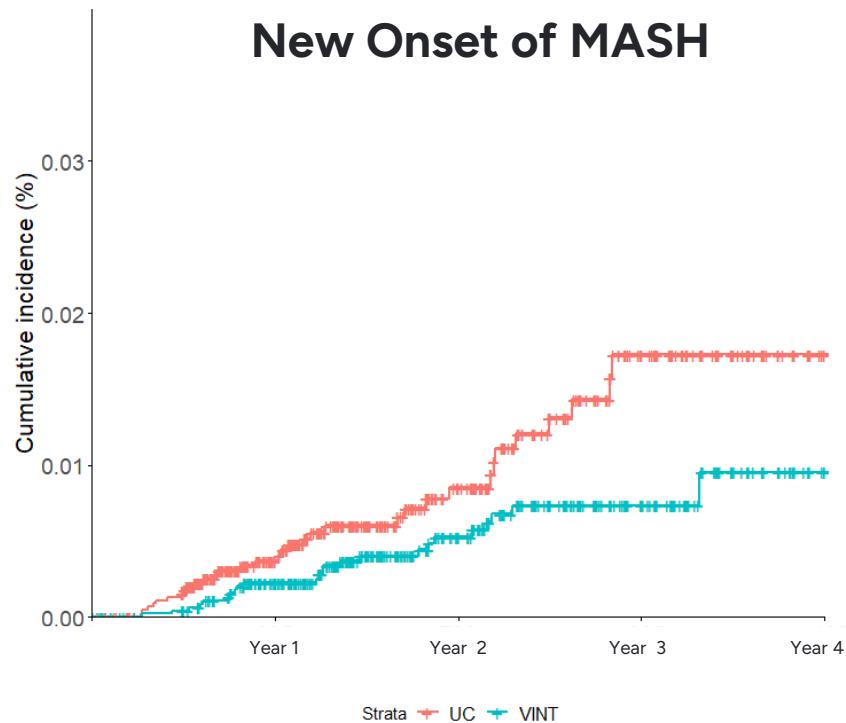
Incidence Rate

Control Group: 11.0 new diagnoses per 1,000 person-years

Virta: 6.0 new diagnoses per 1,000 person-years

Lower rate of new onset of liver disease diagnosis (-43%)

(2x better than GLP-1's)



Incidence Rate

Virta: 2.6 new diagnoses per 1,000 person-years

Control Group: 4.6 new diagnoses per 1,000 person-years



Jim

UPS employee

Results at 1.5 years:

- Reduced A1c from 1.4%
- Eliminated all diabetes medications
- Off his GLP-1 (Trulicity) while losing 40 pounds
- Loves the variety of Virta's recipe catalogue and how sated the meals leave him
- *"I have found a program with instructions, support and a life-changing benefit that now provides me the roadmap I can use to manage my life choices and situation!"*



Carlos

Truck Driver

Old Dominion Freight Line



Results at 150 days:

- Reduced A1c from 11.7% to 5.9%!
- Eliminated ALL insulin
- Down 37 pounds
- *"I couldn't have done it without Virta's guidance! I didn't know how beneficial this program would be but I try to let people know! I'm a walking billboard - lol - thanks again for you all help on helping me become a better me!"*



Thank you!