

Heat and health: The impact of climate change on the Indian subcontinent

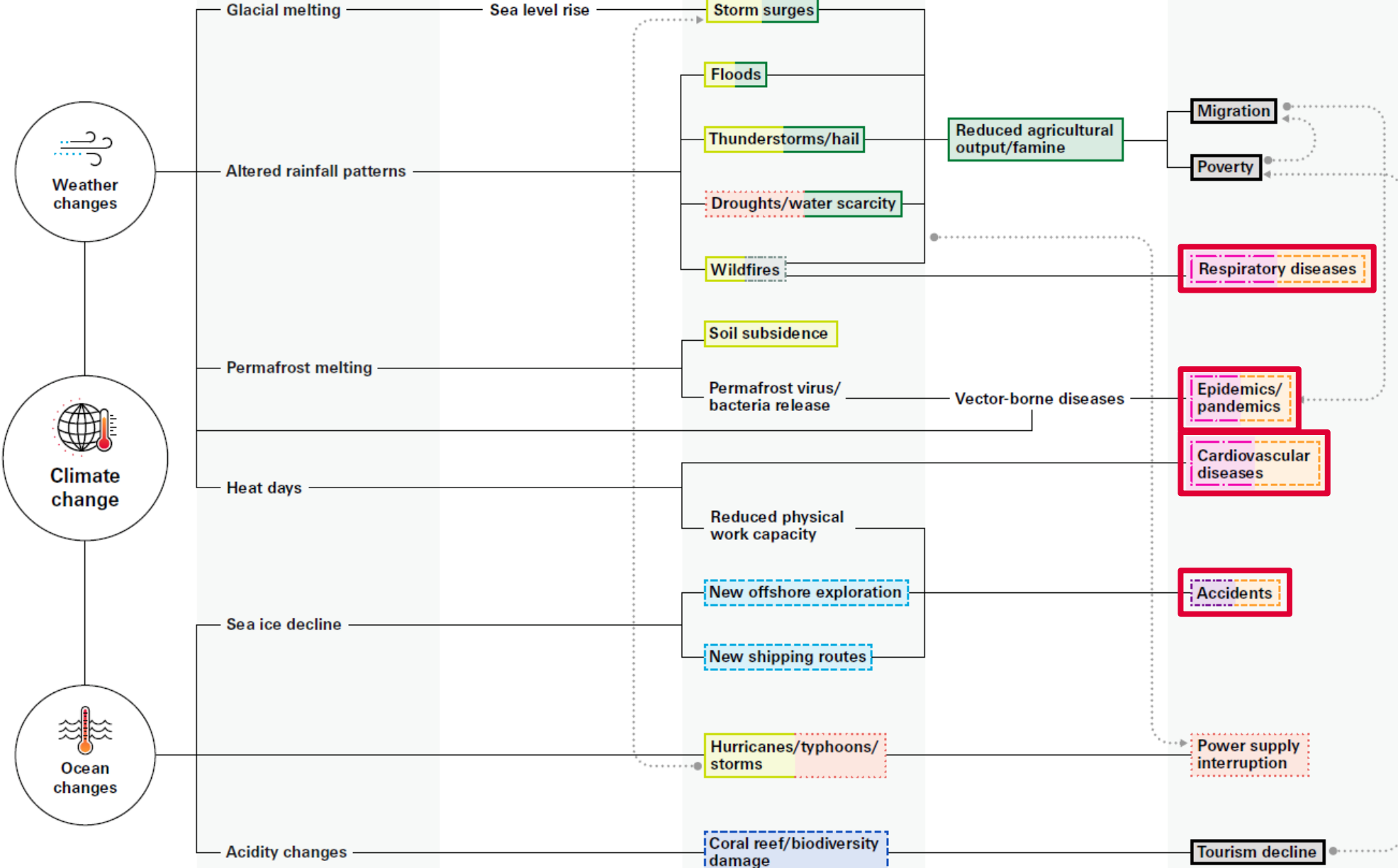
October 2021



Potential impacts of climate change

Trigger → Potential main outcome

-  Property insurance
-  Supply-chain interruption insurance
-  Marine insurance
-  Agriculture insurance
-  Fishery insurance
-  Casualty insurance
-  Workplace accidents insurance
-  Life insurance
-  Health insurance
-  Insurance market growth

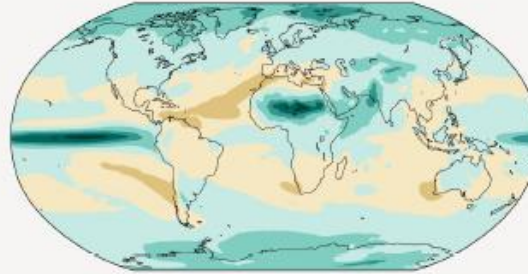


What this means for our future

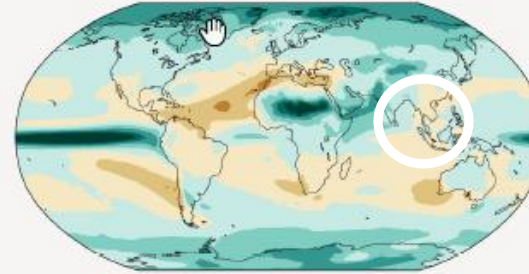
c) Annual mean precipitation change (%) relative to 1850-1900

Precipitation is projected to increase over high latitudes, the equatorial Pacific and parts of the monsoon regions, but decrease over parts of the subtropics and in limited areas of the tropics.

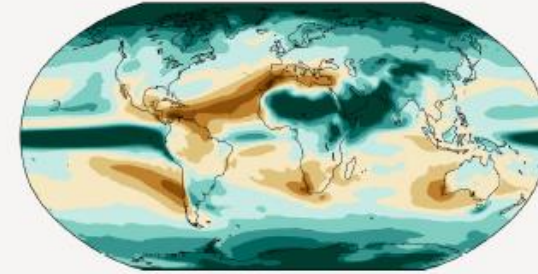
Simulated change at 1.5 °C global warming



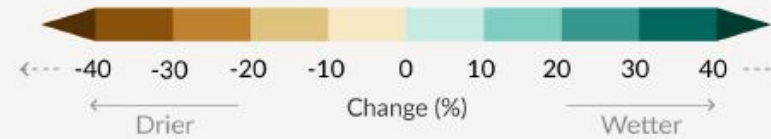
Simulated change at 2 °C global warming



Simulated change at 4 °C global warming



Relatively small absolute changes may appear as large % changes in regions with dry baseline conditions

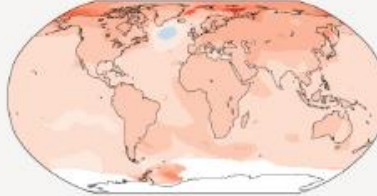


a) Annual mean temperature change (°C) at 1 °C global warming

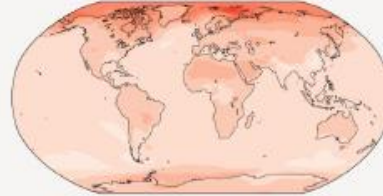
Warming at 1 °C affects all continents and is generally larger over land than over the oceans in both observations and models. Across most regions, observed and simulated patterns are consistent.



Observed change per 1 °C global warming



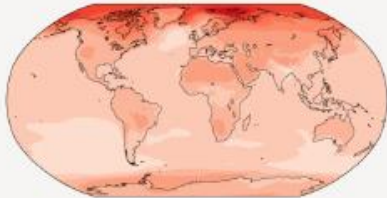
Simulated change at 1 °C global warming



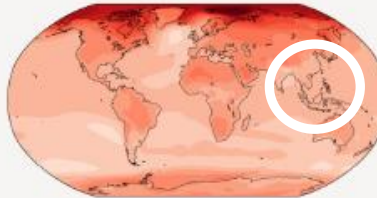
b) Annual mean temperature change (°C) relative to 1850-1900

Across warming levels, land areas warm more than oceans, and the Arctic and Antarctica warm more than the tropics.

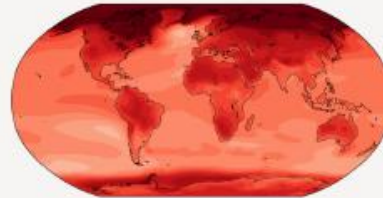
Simulated change at 1.5 °C global warming



Simulated change at 2 °C global warming



Simulated change at 4 °C global warming



Heat and humidity regional distribution will change – and with it disease patterns and health outcomes.



Legal notice

©2021 Swiss Re. All rights reserved. You are not permitted to create any modifications or derivative works of this presentation or to use it for commercial or other public purposes without the prior written permission of Swiss Re.

The information and opinions contained in the presentation are provided as at the date of the presentation and are subject to change without notice. Although the information used was taken from reliable sources, Swiss Re does not accept any responsibility for the accuracy or comprehensiveness of the details given. All liability for the accuracy and completeness thereof or for any damage or loss resulting from the use of the information contained in this presentation is expressly excluded. Under no circumstances shall Swiss Re or its Group companies be liable for any financial or consequential loss relating to this presentation.