

# The Net-Zero Insurance Alliance after one year: How can insurers ensure real-world impact?

CEO Erik Fyrwald



# Two major crises must be solved



## Food Security

**811m** people do not have enough to eat

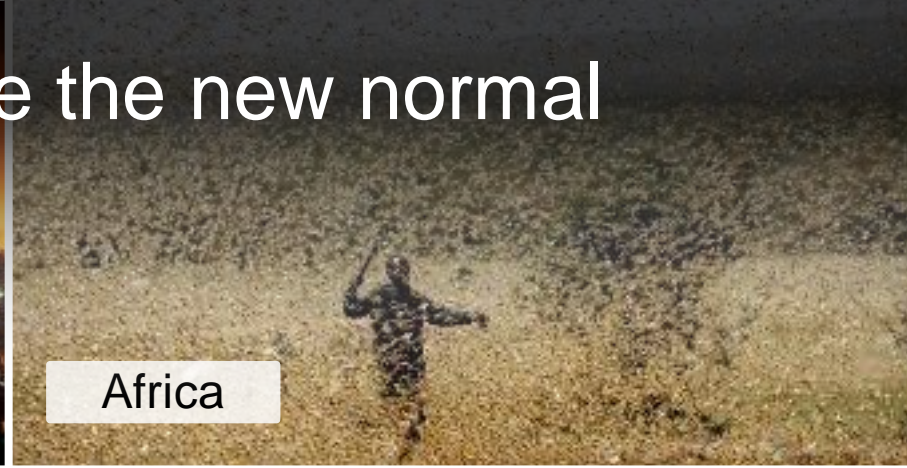
## Climate Change

Agriculture emits **12%** of greenhouse gases

# Weather extremes are the new normal



U.S.



Africa



U.S.



Germany



Brazil

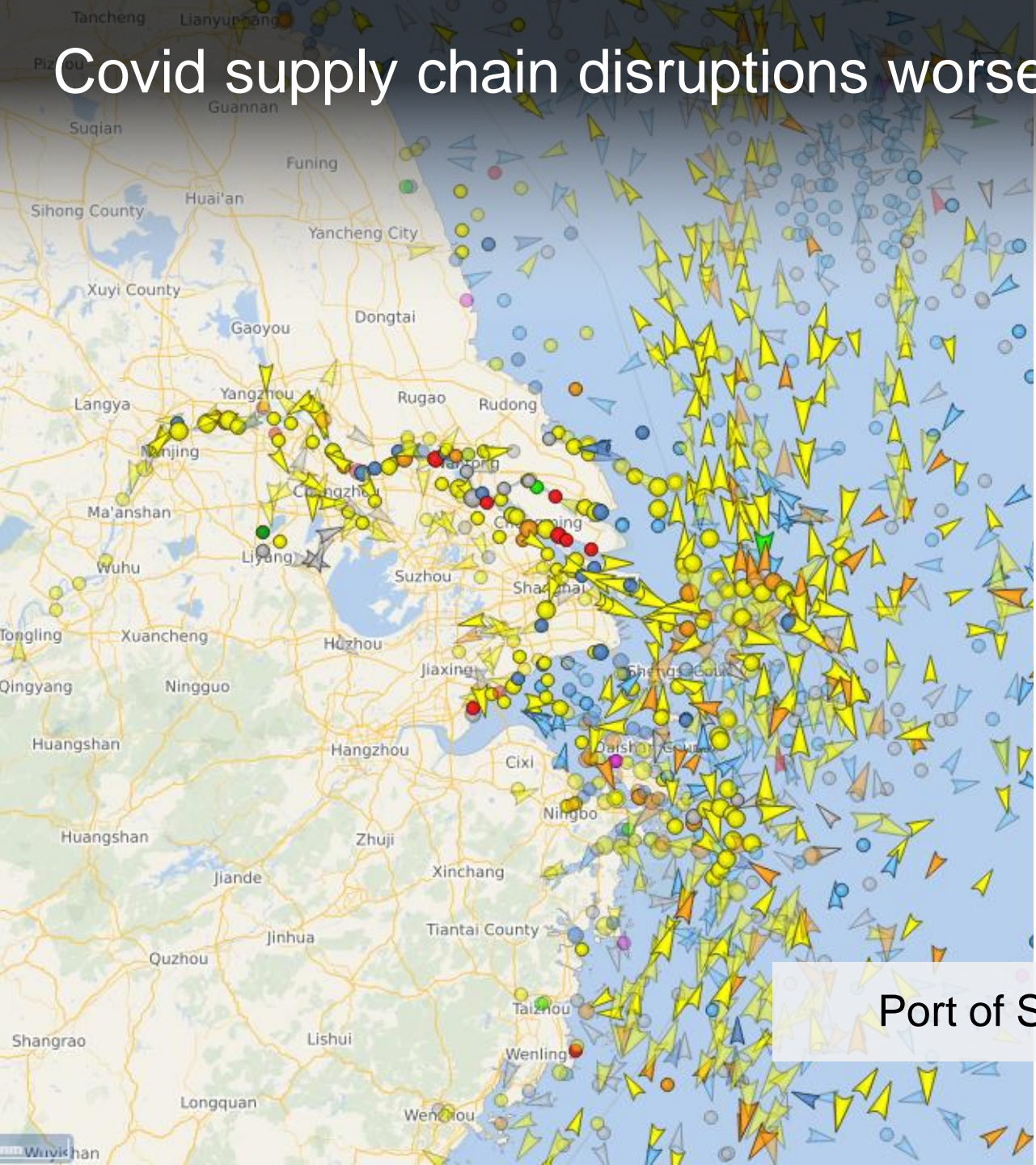


India



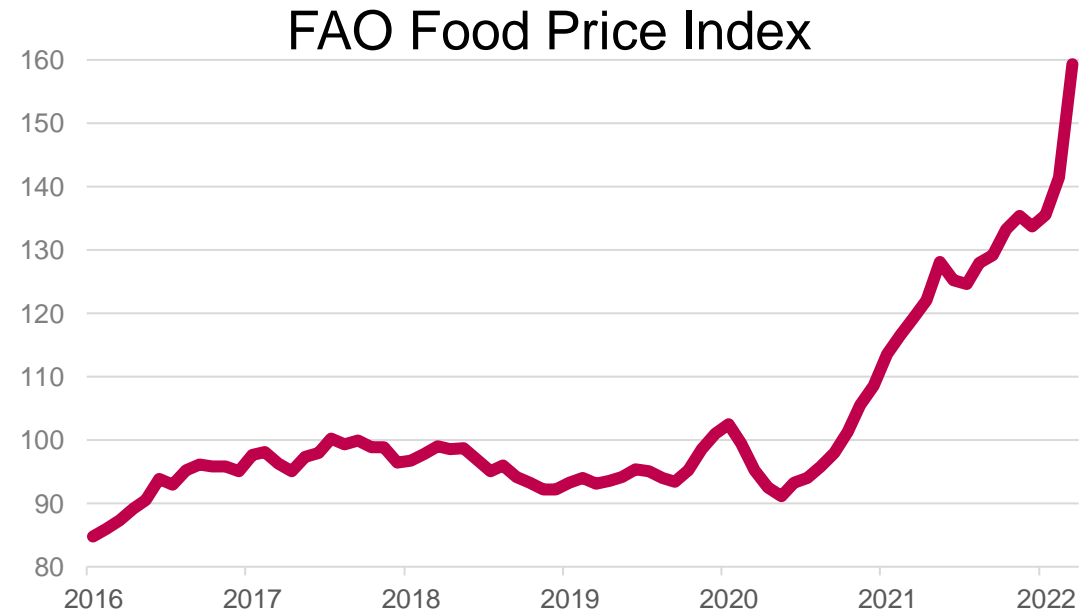
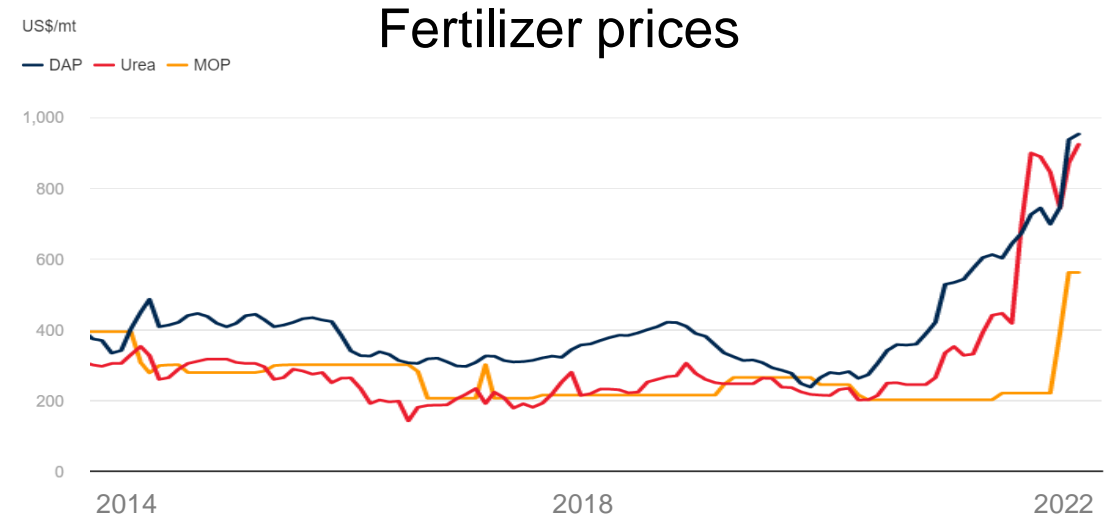
Australia

# Covid supply chain disruptions worsened the food crisis



Port of Shanghai

# Costs for farmers are dramatically rising – and so are food prices



“Ukraine grows food for 400 million people. The World Food Programme buys 50% of its grain from Ukraine, which allows us to feed 125 million people.”

David Beasley, Chief of UN World Food Programme

# Regenerative Agriculture

is an approach that protects and improves **soil health, biodiversity, climate** and **water** while enhancing **productivity**.

## EXAMPLE PRACTICES



**Low or no till**



**Cover crops**  
between seasons  
**And alley cropping**



**More crop rotations**



**Better chemistry**  
lower rates,  
fewer applications  
complemented with biologicals



**Better seeds**  
higher yield and better  
pest protection

# World's biggest food players committing to Regenerative Agriculture



Nestlé committed to **source 50%** of key ingredients through regenerative agricultural methods **by 2030**



PepsiCo committed to regenerative practices across **7 million acres by 2030**



Cargill committed to advance regenerative agriculture practices across **10 million acres** of land in North America **by 2030**



McCain Foods committed to **100%** regenerative agriculture **by 2030**



General Mills committed to **1 million acres** of regenerative agriculture **by 2030**



Walmart works with suppliers to increase adoption of regenerative practices and commits to help manage at least **50 million acres of land by 2030**

# Regenerative practices benefit our 1,659 reference farms

**19%**

Land productivity increase

**57%**

Nutrient efficiency increase

**33%**

Pesticide efficiency increase

**37%**

Greenhouse gas emission reduction





# Brazil pioneering Regenerative farming practices



Reverte farms in Cerrado region



Scheffer's farm and its biologicals



VIPTERA® corn



ISABION®



TYMIRIUM®



Breakthrough technologies

PLINAZOLIN®



Armero®



ADEPYDIN®



# Legal notice

©2022 Swiss Re. All rights reserved. You may use this presentation for private or internal purposes but note that any copyright or other proprietary notices must not be removed. You are not permitted to create any modifications or derivative works of this presentation, or to use it for commercial or other public purposes, without the prior written permission of Swiss Re.

The information and opinions contained in the presentation are provided as at the date of the presentation and may change. Although the information used was taken from reliable sources, Swiss Re does not accept any responsibility for its accuracy or comprehensiveness or its updating. All liability for the accuracy and completeness of the information or for any damage or loss resulting from its use is expressly excluded.

---